

The Silicon Valley Wire

The latest news from the electrical industry in Silicon Valley

4th Quarter 2021

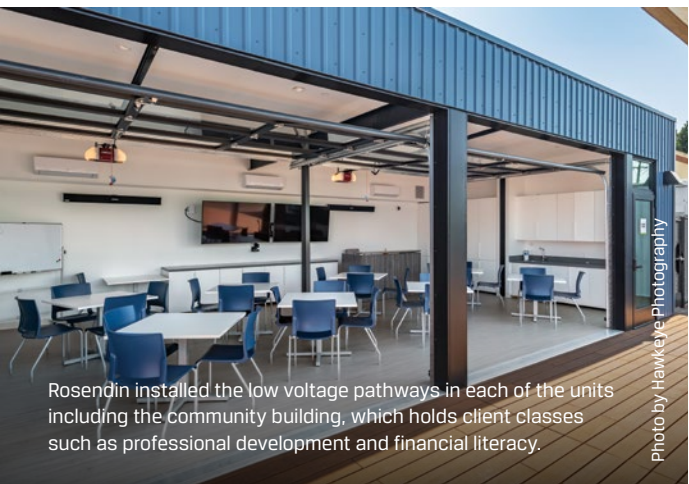
Rosendin Electric Provides Services To LifeMoves Mountain View, An Interim Housing Community for People Experiencing Homelessness



Rosendin Electric installed electrical services to LifeMoves Mountain View, a 100-unit interim housing community for people experiencing homelessness.

Photo by Hawkeye Photography

Rosendin Electric has installed electrical services to LifeMoves Mountain View, a 100-unit interim housing community for unhoused people in Mountain View. The project was developed by LifeMoves, a non-profit organization, in cooperation with the City.



Rosendin installed the low voltage pathways in each of the units including the community building, which holds client classes such as professional development and financial literacy.

Photo by Hawkeye Photography

LifeMoves helps people experiencing homelessness transition to permanent housing through case management and housing location services. LifeMoves Mountain View has beds to serve 124 people. The project is funded through a joint venture with the state, county, City of Mountain View, corporations and individuals.

Rosendin began the project last October, installing the electrical low voltage pathways and the fire alarm system and completed the project in May, 2021. Rosendin worked with over 20 electricians and technicians from the International Brotherhood of Electrical Workers (IBEW) Local 332 in San Jose to finish the project.

CONTINUED ON NEXT PAGE >

Inside This Issue



Rosendin installed wall-mounted panel boards to handle additional power loads at LifeMoves, Mountain View

2



CH Reynolds was subcontracted by DPR to install the backbone fiber and backbone copper for AbbVie Pharmaceuticals.

4



Rosendin worked with Intrepid Electronics to install the fire alarm system at LifeMoves, Mountain View

8



Rosendin Electric installed electrical services to LifeMoves Mountain View, a 100-unit interim housing community for people experiencing homelessness.

Photo by Hawkeye Photography

Rosendin Electric Provides Services To LifeMoves Mountain View, An Interim Housing Community for People Experiencing Homelessness

CONTINUED FROM PAGE 1

The prefabricated modular units, some constructed from storage containers, were built in a factory and interconnected on site within a six-month timeframe. Rosendin Electric provided services for the installation of the electrical infrastructure, low voltage pathways and fire alarm systems for the interim housing project. XL Construction served as the general contractor. Joanne Price, V.P., Real Estate & Operations,

led the project for LifeMoves..

The prefabricated units provide shelter for 88 individuals and 12 families. Every family has a private room, heating and air conditioning, with a front door that locks. Clients are anticipated to stay for 90 to 120 days while they get established and begin on the path to more permanent housing.

LifeMoves connects clients to primary

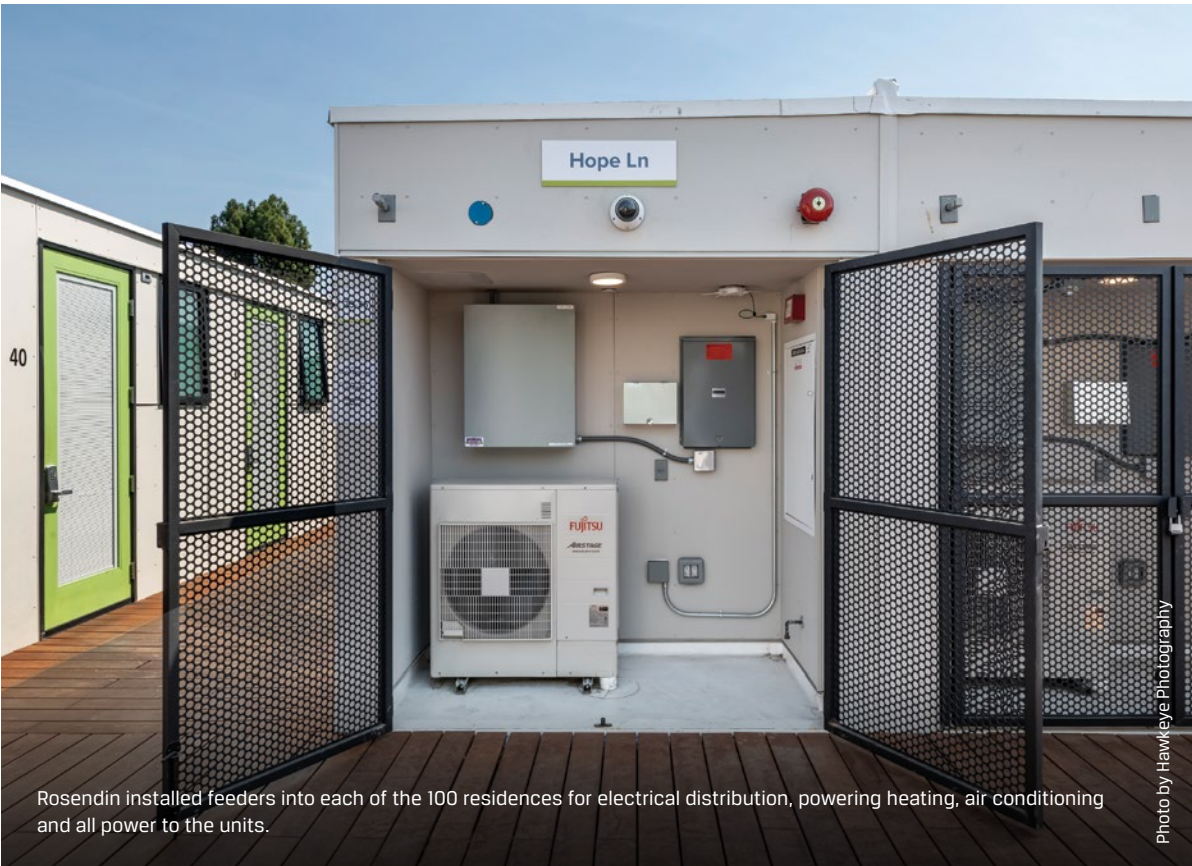
and behavioral health care, safety net and supportive services and other benefits, along with providing job placement resources and classes on subjects such as professional development and financial literacy. A food service area and community building are at the heart of the site.

Rosendin installed feeders into each of the 100 units for electrical



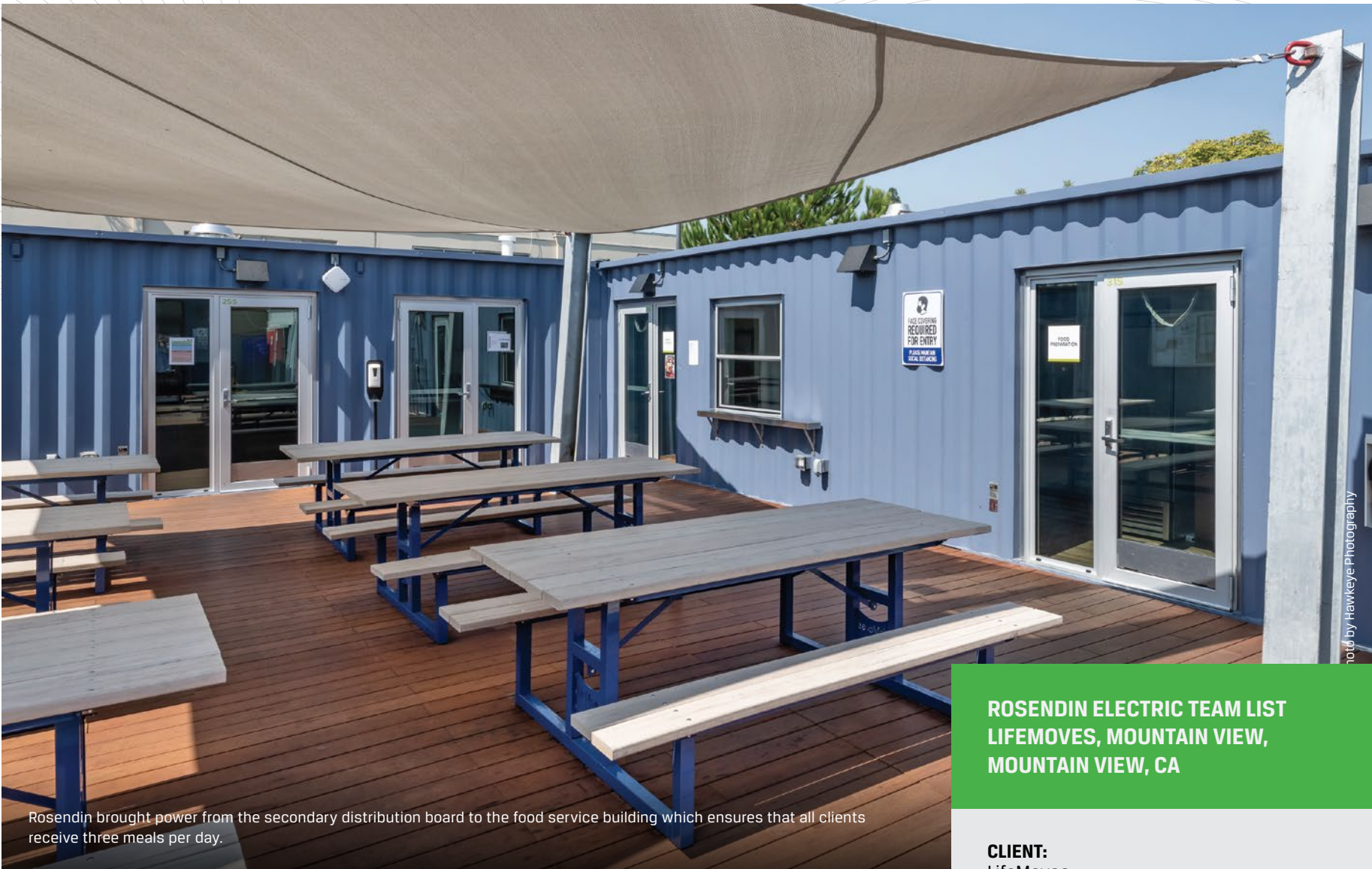
Rosendin Electric interconnected each prefabricated unit to the site's electrical service to provide power for for heating and air conditioning.

Photo by Hawkeye Photography



Rosendin installed feeders into each of the 100 residences for electrical distribution, powering heating, air conditioning and all power to the units.

Photo by Hawkeye Photography



Rosendin brought power from the secondary distribution board to the food service building which ensures that all clients receive three meals per day.

distribution. Before Rosendin could set up the distribution panel for the units, it worked with PG&E to develop new service for the site and bring the utility service in from the street. In order to set up the distribution of service for each unit, Rosendin installed a main distribution board, toward the front of the project and then another secondary distribution board toward the middle of the project.

In addition, wall-mounted panel boards were put on the exterior of a number of the units to handle additional loads. Rosendin also installed the low voltage pathways in all of the buildings. Rosendin worked with Intrepid Electronics to install the fire alarm

system. The monitoring station and main panel for the fire alarm system are located in the security office on site.

"It was a very meaningful project in that it allowed us the opportunity to do something in the community that has a very positive impact, getting people off the street and into permanent housing," said Ryan Gill. "We developed an incredible partnership with the owner, the general contractor, the city and the utility."

For more information about Rosendin Electric and its services, contact Ryan Gill, Project Executive at 702.513.6044 or email Ryan Gill at rgill@rosendin.com or go to <http://rosendin.com>

**ROSENDIN ELECTRIC TEAM LIST
LIFEMOVES, MOUNTAIN VIEW,
MOUNTAIN VIEW, CA**

- CLIENT:**
LifeMoves
Joanne Price, Vice President
David Borcean, Director Construction
Saresh Regis
Keith Brown, Senior Vice President
Ken Rakestraw, Assistant Vice President
Thor Hoskins, Project Manager
- GENERAL CONTRACTOR:**
XL Construction
Milenko Dugorepec, Project Manager
Brian Kitchen, Superintendent
Jake Adams, Project Engineer
- ARCHITECT:**
The Offices of Charles Boszies Architects
Charles Boszies
- PACIFIC GAS & ELECTRIC:**
Osvaldo Florez
- ELECTRICAL & LOW VOLTAGE CONTRACTOR:**
Rosendin Electric
Angela Rundle, Division Manager
Ryan Gill, Project Executive
Justin Smith, Project Manager
Tod Devlin, Superintendent
Bryan Kamperman, General Foreman
- FIRE ALARM CONTRACTOR:**
Intrepid Electronics
Kurt Brinkman, CEO
C.C. Biggs, Vice President
- ELECTRICIANS AND TECHICIANS:**
International Brotherhood of Electrical Workers (IBEW) Local 332, San Jose



Rosendin installed a secondary distribution board near the center of the project



Key members of the Rosendin team (from left to right): Tod Devlin, Bryan Kamperman, Angela Rundle, Ryan Gill, Rich Cotton



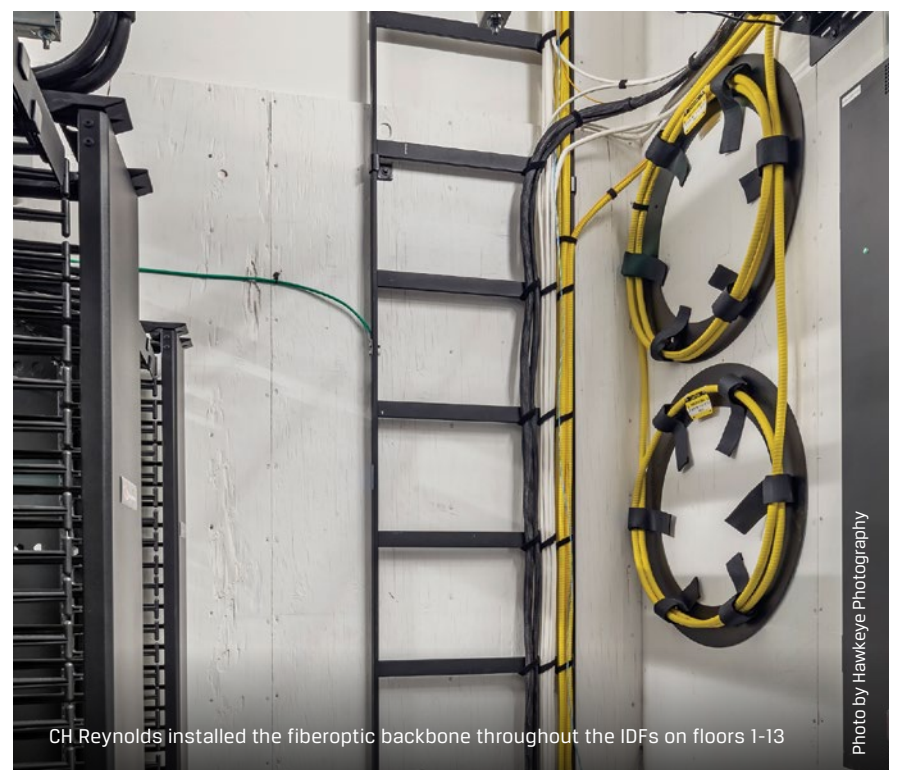
CH Reynolds Wires 6,000 Work Stations and Fiber Backbone for AbbVie Pharmaceuticals' New West Coast Headquarters

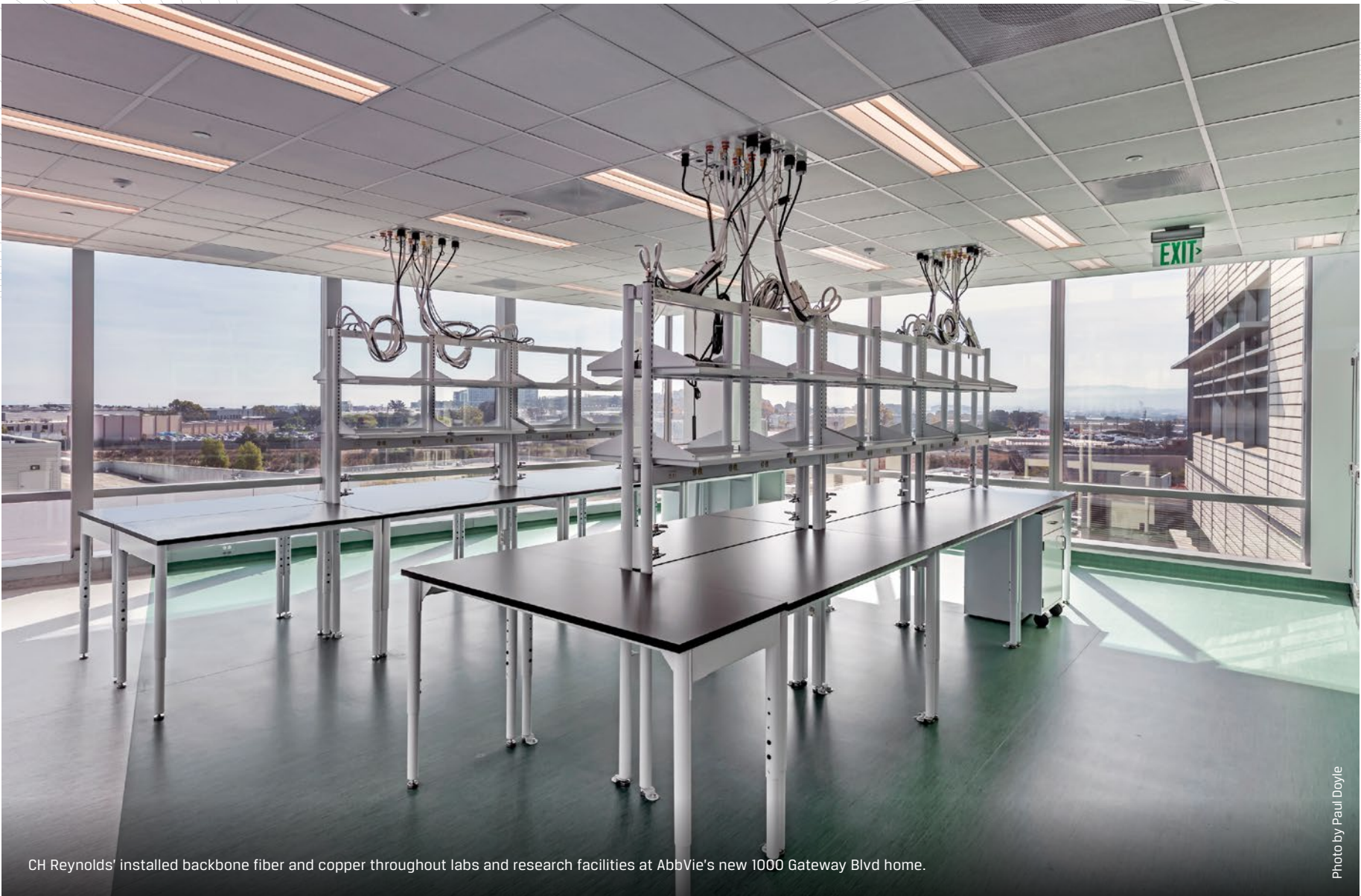
AbbVie Pharmaceuticals, a research-based global biopharmaceutical company, is moving into its new 13-story West Coast Headquarters in South San Francisco, thanks to assistance from CH Reynolds, a NECA/IBEW electrical contractor that installed the \$12.5 million low voltage service to the building.

CH Reynolds services include installing data cabling for 6,000 workstations, installing electrical pathways for the low voltage systems, cabling for the backbone fiber and backbone copper systems and cabling for the access control, CCTV, ERRCS, and sound masking systems. CH Reynolds began the project in March 2020 and will complete it this fall.

AbbVie's new space at 1000 Gateway Blvd. includes offices, labs, and research facilities. The 485,000 square foot space will allow AbbVie to add hundreds of new employees. The building was built by BioMed Realty.

The CH Reynolds team is led by Curtis Chipley, a senior project manager. Technicians who worked on the project are from various International





CH Reynolds' installed backbone fiber and copper throughout labs and research facilities at AbbVie's new 1000 Gateway Blvd home.

Photo by Paul Doyle

Brotherhood of Electrical Workers (IBEW) locals throughout the Bay Area.

The general contractor for the project is DPR and the architect is Flad Architects of San Francisco. The telecommunications consultant is TEECOMM. TEECOM designed the data communications, security and audio video systems.

CH Reynolds installed both the backbone fiber and backbone copper system for the building. The building is L-shaped and runs north and south through the 5th floor. Everything from the sixth floor and above runs north only.

CH Reynolds installed two MDF (Main Distribution Frame) rooms on the first

floor, a North MDF and a South MDF. The MDF includes a wiring rack that connects outside lines with internal lines and is the main computer room for servers, hubs, routers, etc. There are 2 IDFs (Independent Distribution Frame rooms) on floors 1-5 and 1 IDF on floors 6-13. An IDF is a remote room or closet connected to the MDF and is used for hubs and patch panels. Fiber tie cabling goes from the north MDF to the North IDFs and from the south MDF to the south IDFs. CH Reynolds also installed fiber that connects the two MDFs together.

CH Reynolds installed the low voltage pathways for the entire 13 story building,

CONTINUED ON NEXT PAGE >

CH REYNOLDS TEAM LIST ABBVIE PHARMACEUTICALS

- CLIENT:**
Abbvie Pharmaceuticals
- GENERAL CONTRACTOR:**
DPR, San Jose
- ARCHITECT:**
Flad Architects, San Francisco
- TELECOMMUNICATIONS CONSULTANT:**
TEECOMM, San Francisco;
Dave Main, Principal
- ELECTRICAL & LOW VOLTAGE CONTRACTOR:**
CH Reynolds, San Jose
Curtis Chipley, RCDD, Senior Project Manager
Jack Toland, General Superintendent, Data
Douglas Phillips, Superintendent, Electrical
Jaron Batteux, General Foreman
Robert McDowell, General Foreman
Bill Stonitsch, Data General Foreman
- TECHNICIANS:**
International Brotherhood of Electrical Workers Local 617, San Mateo and other IBEW Locals in the Bay Area.



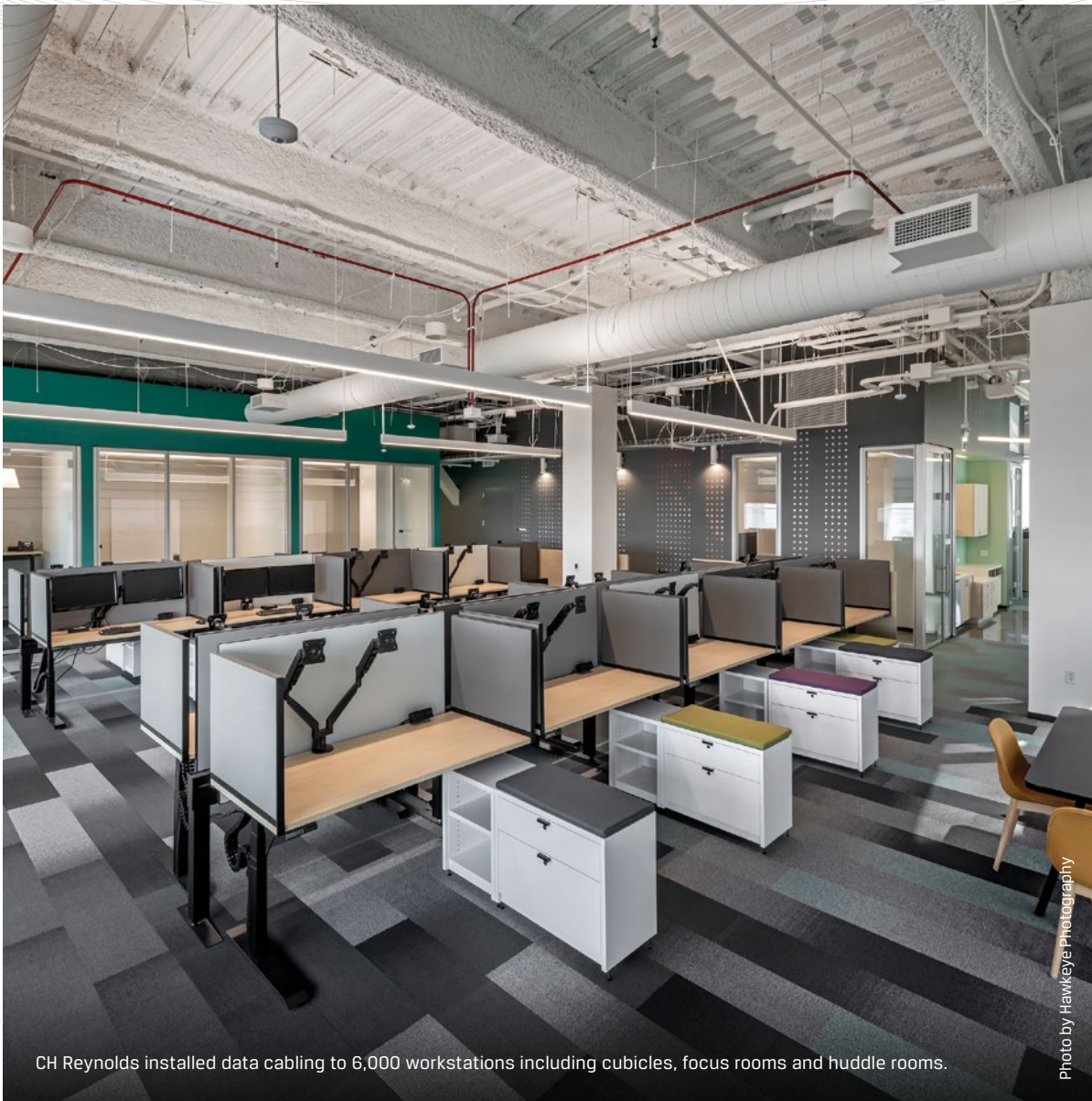
CH Reynolds pulled fiber from the IDFs into the cable trays to service the 6,000 work stations.

Photo by Hawkeye Photography



Key members of CH Reynolds' team (from left to right): Jack Toland, General Superintendent, Data; Curtis Chipley, RCDD, Senior Project Manager

Photo by CH Reynolds



CH Reynolds installed data cabling to 6,000 workstations including cubicles, focus rooms and huddle rooms.

Photo by Hawkeye Photography



CH Reynolds built out IDF's on floors 1-8 that connect to the MDF and are used for hubs and patch Panels.

Photo by Hawkeye Photography

CH Reynolds Wires 6,000 Work Stations and Fiber Backbone for AbbVie Pharmaceuticals' New West Coast Headquarters

CONTINUED FROM PAGE 1

including installation of the conduit work and cable pathways. The cabling is installed in a basket tray that goes down the main hallways, and then feeds into the IDF rooms. The basket trays feed into the outlying areas through a jaco pathway installed by CH Reynolds.

CH Reynolds also installed data cabling to 6,000 workstations, which included wiring 12,000 Cat 6A cables.

(Cat 6A cable is used because it is 10 times faster than Cat 6; Cat 6 carries one gig per second; Cat 6A carries 10 gigabytes per second)

CH Reynolds installed the Lencore sound masking system, which included hanging and tuning 1,500 speakers.

The sound masking system is tuned based on the infrastructure of the building—how it's constructed, various

densities and thicknesses of the walls and ceilings, etc. Once the tuning is determined to be a certain decibel level, this is implemented into the speakers. If the system isn't tuned properly, it won't properly mask the sound.

CH Reynolds also installed 300 cameras for the CCTV system and 250 Siemens card readers for the access control system. The access control system card



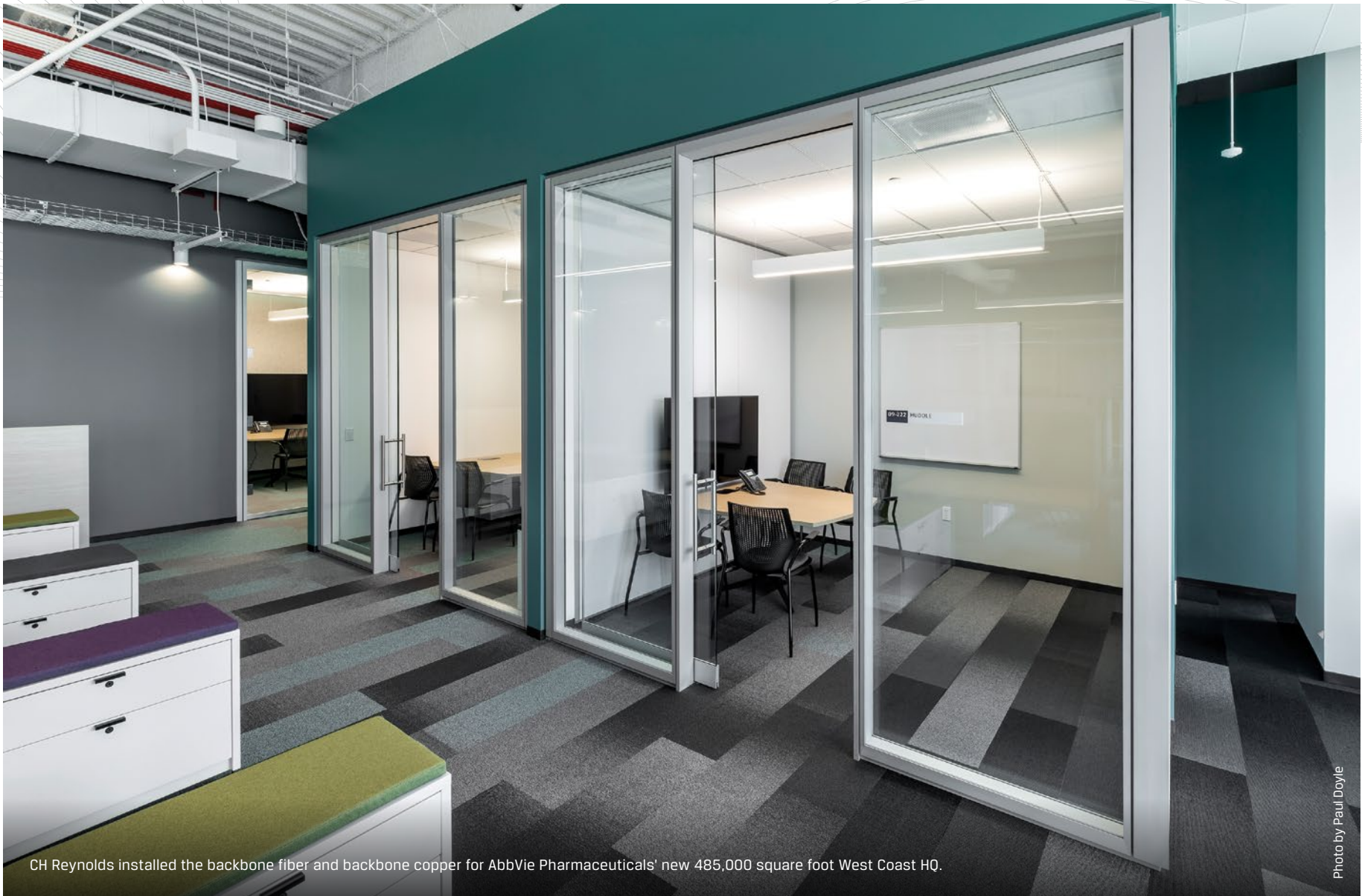
CH Reynolds installed tailgating sensors to ensure that each individual entering an area uses a badge at the card reader.

Photo by Hawkeye Photography



CH Reynolds installed 250 Siemens card readers for the access control system.

Photo by Hawkeye Photography



CH Reynolds installed the backbone fiber and backbone copper for AbbVie Pharmaceuticals' new 485,000 square foot West Coast HQ.

Photo by Paul Doyle

readers that were installed included tailgating devices or tailgating sensors, so that one person can't access a specific area by following right behind another person without badging.

CH Reynolds built out the ERRCS (Emergency Responder Radio Coverage System) by adding additional antennas and other components so that it is fully compliant. The ERRCS system is a special communication system for police, fireman, and first responders so that they can speak by radio within the building and back to their headquarters if there is an emergency.

CH Reynolds installed emergency response antennas beginning with a donor antenna that lives on the roof. It runs on 700 megahertz and points to a UHF VHF antenna that is connected to the local fire department in South San Francisco. CH Reynolds also installed the wireless access points throughout the building.

For more information about CH Reynolds and its services, contact Curtis Chipley, RCDD, Senior Project Manager, at 1.408.436.9280 x 2138 (office) or 1.408.497-8184 (mobile) or curtisc@chreynolds.com or go to <http://www.chreynolds.com>



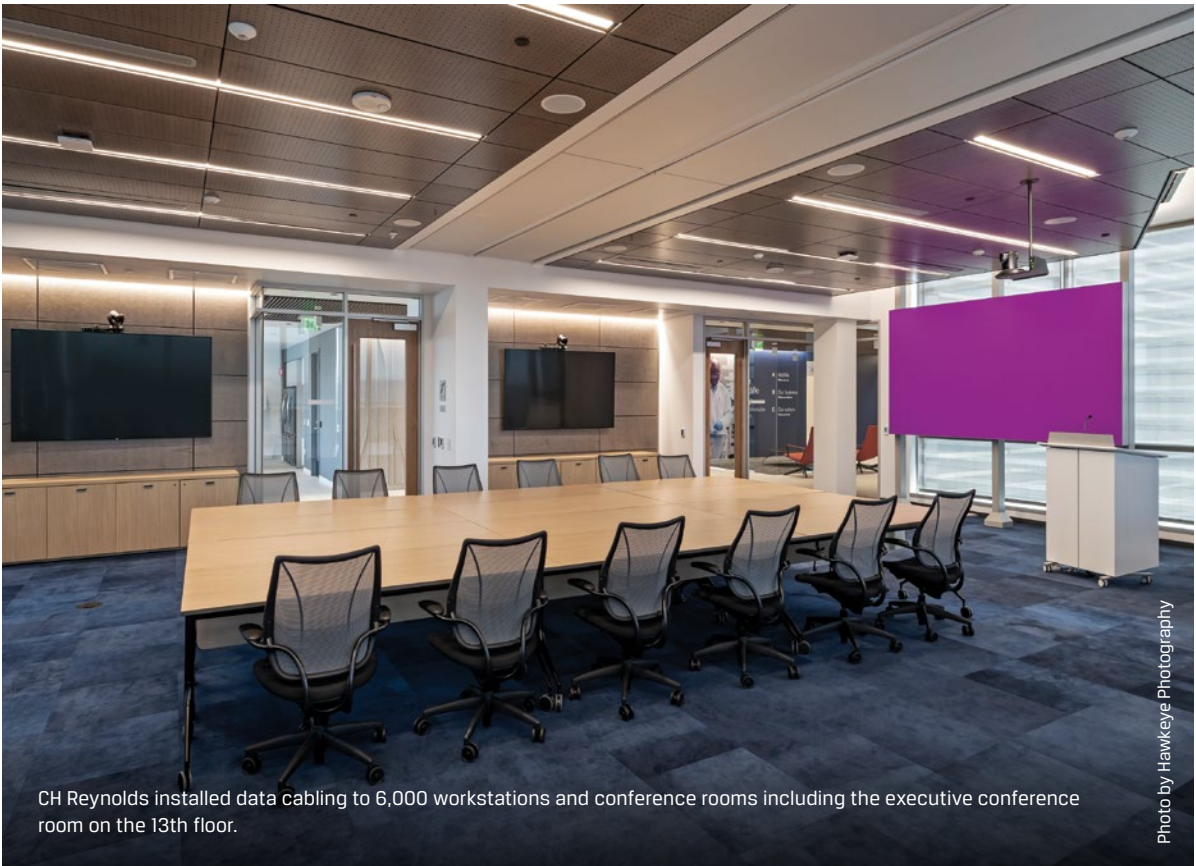
CH Reynolds installed 300 cameras for the CCTV system.

Photo by Hawkeye Photography



CH Reynolds installed the low voltage pathways for the entire 13 story building.

Photo by Hawkeye Photography



CH Reynolds installed data cabling to 6,000 workstations and conference rooms including the executive conference room on the 13th floor.

Photo by Hawkeye Photography

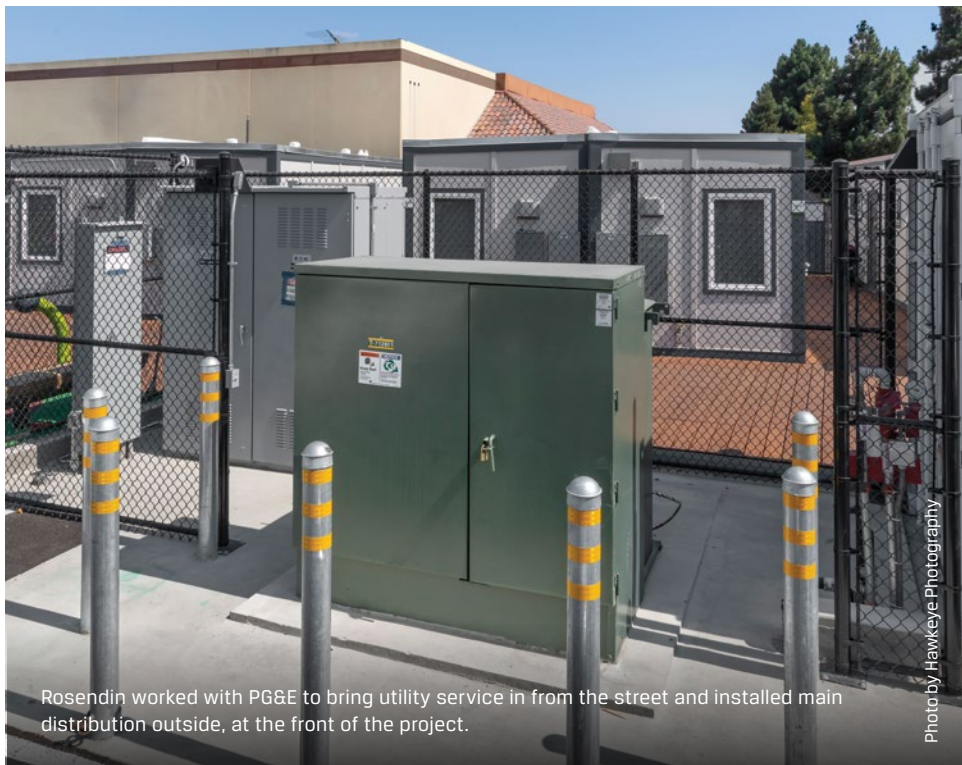
Rosendin Electric Provides Services To LifeMoves Mountain View, An Interim Housing Community For People Experiencing Homelessness

CONTINUED FROM PAGE 3



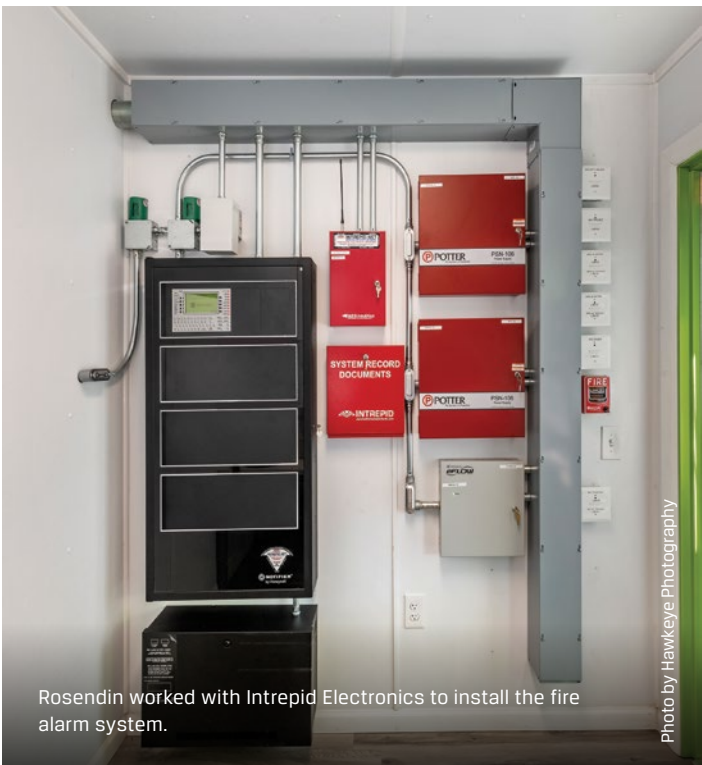
Rosendin installed wall-mounted panel boards to power the family units, which are twice as large as the individual units and feature a play area for children.

Photo by Hawkeye Photography



Rosendin worked with PG&E to bring utility service in from the street and installed main distribution outside, at the front of the project.

Photo by Hawkeye Photography



Rosendin worked with Intrepid Electronics to install the fire alarm system.

Photo by Hawkeye Photography