

# The Silicon Valley Wire

The latest news from the electrical industry in Silicon Valley

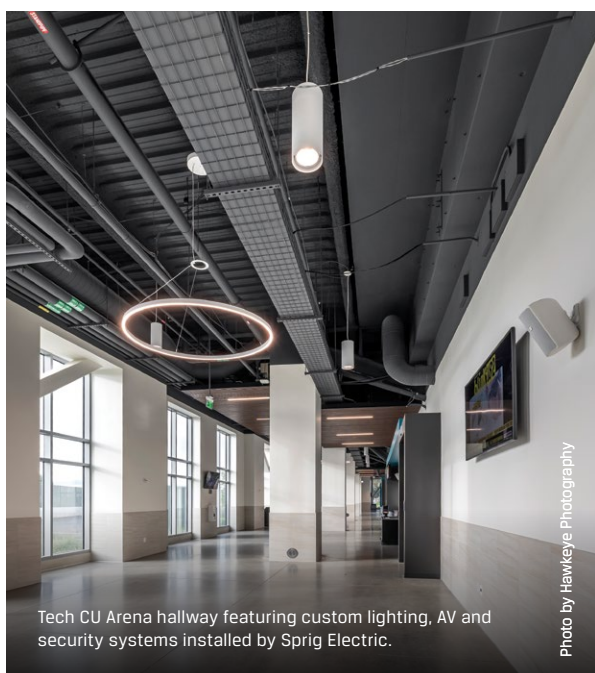
3rd Quarter 2023



The new state-of-the-art Tech CU Arena addition to the Sharks Ice complex in San Jose

Photo by Hawkeye Photography

## Sprig Electric Installs Electrical Infrastructure for Sharks Ice Arena Expansion in San Jose



Tech CU Arena hallway featuring custom lighting, AV and security systems installed by Sprig Electric.

Photo by Hawkeye Photography

Sharks Ice, located at 1500 S. 10th Street in San Jose, is the official practice facility for the National Hockey League's (NHL) San Jose Sharks, and the new home for the San Jose Barracuda, the American Hockey League (AHL) development affiliate of the San Jose Sharks.

Owned by the City of San Jose and operated by Sharks Sports and Entertainment, the Sharks Ice San Jose facility recently underwent a large-scale \$120M expansion which doubled its footprint to nearly 370,000 square-feet. It is now the largest ice rink facility west of the Mississippi and one of only seven rink facilities currently operating in the U.S. with at least six NHL-sized ice rinks. Completed in January 2023, the expansion features the addition of the Tech CU Arena, a state-of-the-art, 4,200-seat spectator arena. Sharks Ice San Jose serves a diverse list of

### Inside This Issue



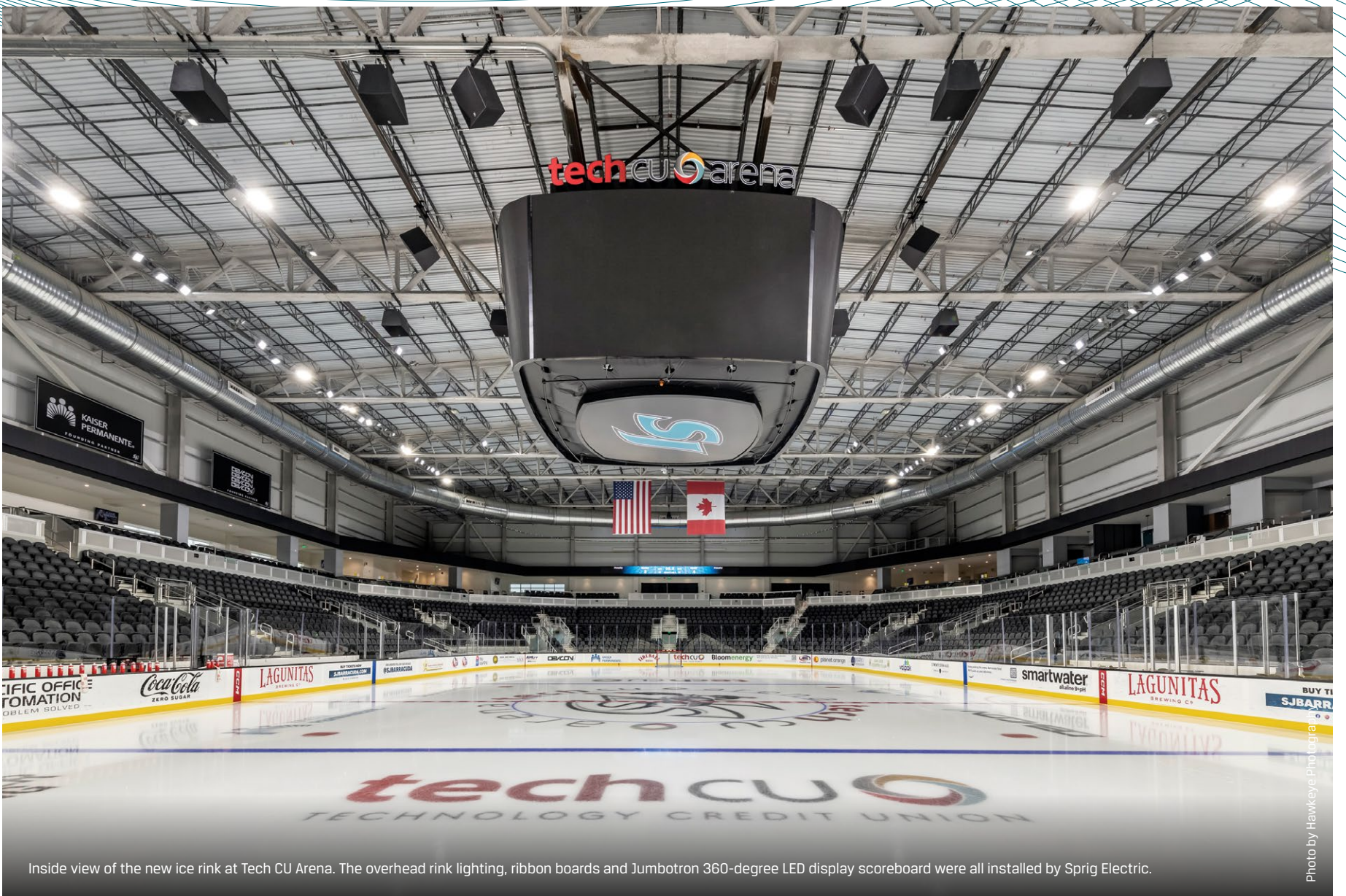
Sprig Electric Installs Electrical Infrastructure for Sharks Ice Arena Expansion in San Jose

1



Yotta Electrical Services Installs Electrical Wiring In The New And Revamped TB And Refugee Clinic Of Santa Clara County

5



Inside view of the new ice rink at Tech CU Arena. The overhead rink lighting, ribbon boards and Jumbotron 360-degree LED display scoreboard were all installed by Sprig Electric.

Photo by Hawkeye Photography

*In March, Sprig's Russell Jones attended a Barracuda hockey game at the new Tech CU Arena. "It was wonderful – a lot of fun. The lighting looked unbelievable. I was really proud of the job our whole team did to help create such a vibrant environment."*

sports across its six ice sheets including ice hockey, figure skating, broomball, curling, speed skating, ice dancing, as well as public skating. In addition to hosting the Sharks and Barracudas, Sharks Ice hosts the San Jose State University Spartans hockey team, the Junior Sharks hockey program, the Peninsula Figure Skating Club and the Silicon Valley Curling Club.

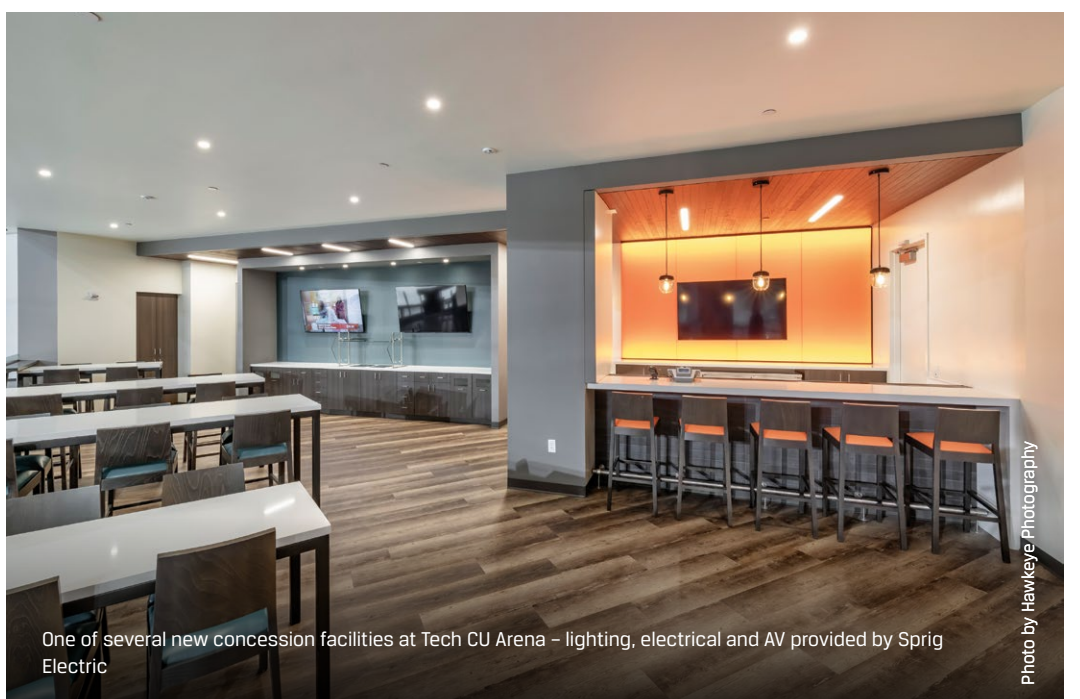
Sprig Electric began preconstruction work on the Sharks Ice expansion project in late 2020. Will Saporito was the original Sprig Project Manager who oversaw preconstruction and set the team up for success. Russell Jones took over the project in mid-2021, after Saporito passed away. Jones worked with an 18-man core crew from the International Brotherhood of Electrical Workers (IBEW) Local 332 in San Jose. The Sprig Group Executive for the project was Brad Foster and the General Foreman was Dominik Svensson. Devcon Construction acted as the architect and general contractor.

Sprig provided full design build services for the electrical



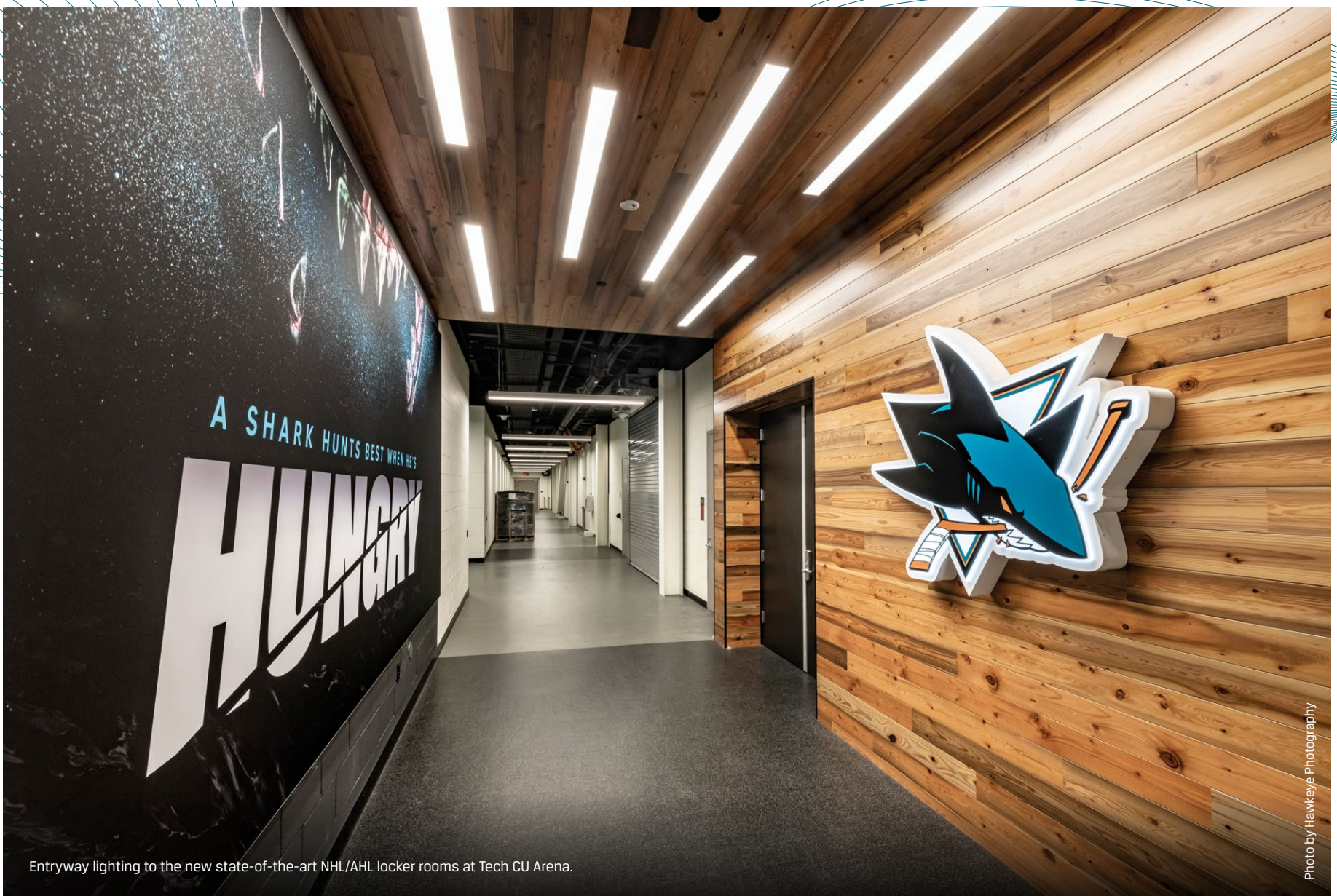
New electric vehicle charging system/stations installed at Tech CU Arena.

Photo by Hawkeye Photography



One of several new concession facilities at Tech CU Arena – lighting, electrical and AV provided by Sprig Electric

Photo by Hawkeye Photography

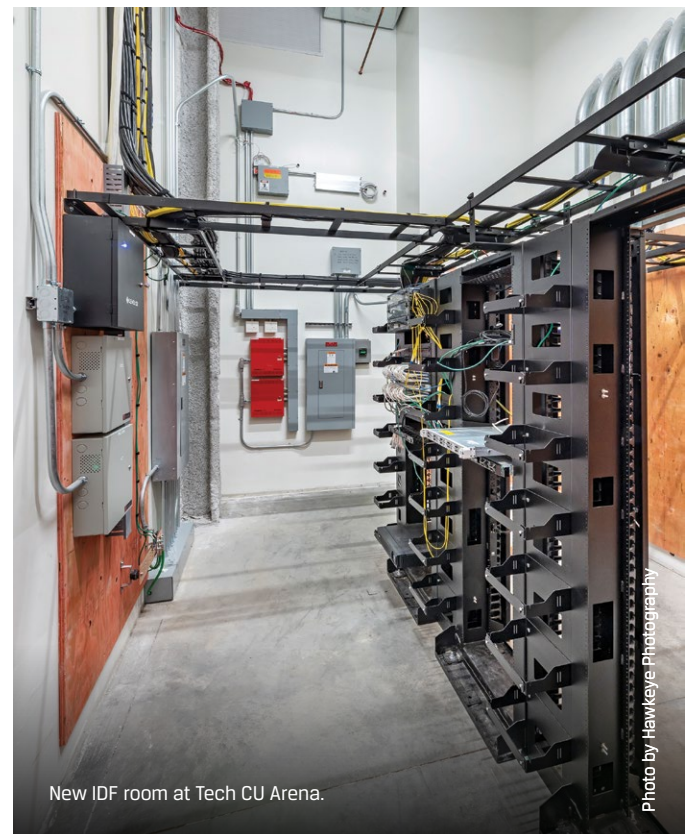


Entryway lighting to the new state-of-the-art NHL/AHL locker rooms at Tech CU Arena.

Photo by Hawkeye Photography

infrastructure and installed the lighting and power for the entire Sharks Ice San Jose expansion. The lighting and power requirements included installation of a primary generator as well as an emergency generator, installation of the main switch boards and panels throughout the facility, and lighting for the entire facility including a new DLM Watt Stopper lighting control system for energy efficiency, overhead rink lighting and powering up the ribbon boards and main scoreboard –a Jumbotron with a 360-degree LED display ring. The project also required lighting and powering two new locker rooms, new state-of-the-art training facilities and executive office space, 12 suites, eight loge boxes, one theatre suite, a party deck, three bar locations, seven food concession stations, a press room and press box and two team merchandise stores.

One unique lighting challenge Sprig encountered was the installation of the overhead lighting for the ice rinks. The very heavy lights had to be supported while installing them 50 feet in the air while also



New IDF room at Tech CU Arena.

Photo by Hawkeye Photography



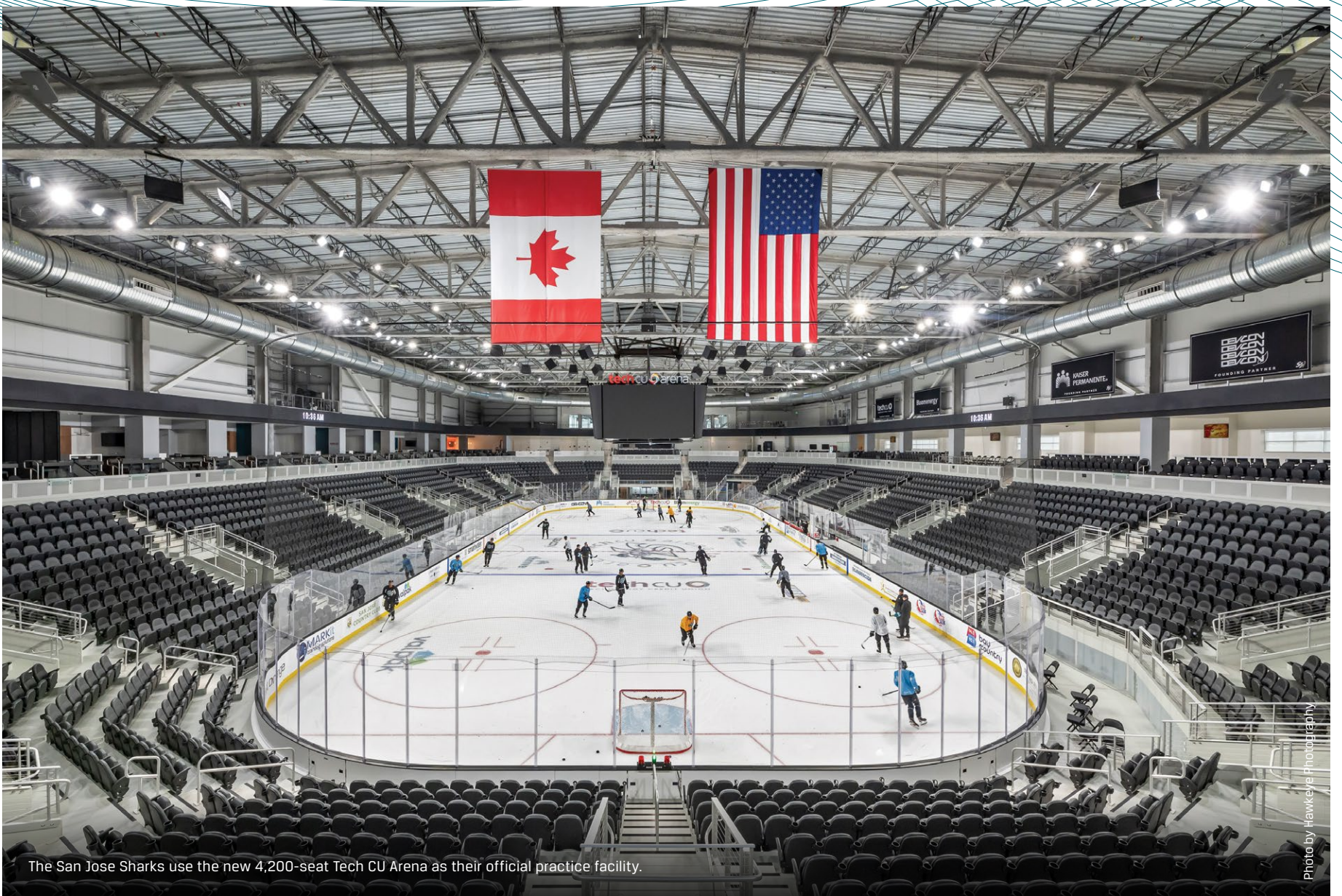
Sprig Electric oversaw the installation of the main switch boards and panels throughout the Tech CU Arena facility.

Photo by Hawkeye Photography



Security cameras are installed throughout Tech CU Arena as part of the complete Fire Alarm, Security and Emergency Responder Radio Communication (ERRCS) systems installed by Sprig Electric.

Photo by Hawkeye Photography



The San Jose Sharks use the new 4,200-seat Tech CU Arena as their official practice facility.

Photo by Hawkeye Photography

keeping them stable without movement. The installation required a custom steel system to hold the lights in place while maintaining good lighting output and moving heavy lifts onto the actual ice to install the fixtures.

Sprig also provided and installed complete Fire Alarm, Security and Emergency Responder Radio Communication (ERRCS) systems ranging from cameras to card readers for the entire Sharks Ice facility. Sprig worked with Arch Key Technologies to install the security system. The Sprig Security Project Manager was Mark Etter. Sprig's Fire and Life Safety Division installed the head end unit in the fire alarm control room and cables running from device to device for a complete fire alarm system. The Sprig Fire Alarm Project Manager was Sunita Mistry, and the Sprig ERRCS Project Manager was Michael Pryer.

#### SHARKS ICE PROJECT TEAM

**OWNER:**

City of San Jose

**ARCHITECT:**

Devcon Construction

**GENERAL CONTRACTOR:**

Devcon Construction

**ELECTRICAL CONTRACTOR:**

Sprig Electric  
 Brad Foster, Group Executive  
 Dominik Svensson, General Foreman  
 Will Saporito, Project Manager  
 Russell Jones, Project Manager

**SECURITY SYSTEM CONTRACTOR:**

Arch Key Technologies and Sprig Electric  
 Mark Etter, Project Manager

**FIRE ALARM & ERRCS CONTRACTOR:**

Sprig Electric, Fire and Life Safety Division  
 Sunita Mistry, Project Manager, Fire Alarm  
 Michael Pryer, Project Manager, ERRCS

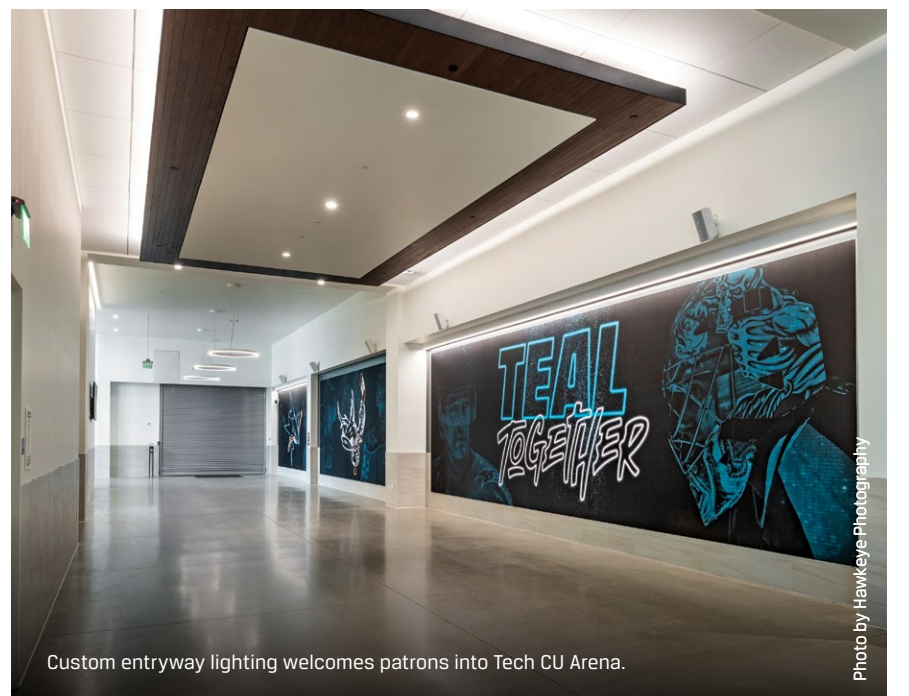
**ELECTRICIANS AND TECHNICIANS:**

18-man core crew from the International Brotherhood of Electrical Workers (IBEW) Local 332 in San Jose



Sprig's Fire and Life Safety Division installed the head end unit in the fire alarm control room and cables running from device to device throughout Tech CU Arena for a complete fire alarm system.

Photo by Hawkeye Photography



Custom entryway lighting welcomes patrons into Tech CU Arena.

Photo by Hawkeye Photography



The new Lundy Avenue home of the Tuberculosis and Refugee Clinic of Santa Clara County, where refugees are screened and treated for communicable diseases.

Photo by Hawkeye Photography

# Yotta Electrical Services Installs Electrical Wiring In The New And Revamped TB And Refugee Clinic Of Santa Clara County

Yotta Electrical Services has installed new electrical wiring in the revamped Tuberculosis and Refugee Clinic of Santa Clara County on Lundy Avenue, which will open in 2023. The clinic, currently located at the Valley Health Center Lenzen in San Jose, is moving to a larger home at 1996 Lundy Avenue.

The clinic provides refugee health assessments for newly arriving refugees. New arrivals are screened for communicable diseases including TB, and the clinic offers diagnosis and treatment of latent and active tuberculosis.

Yotta Electrical Services gutted the existing electrical system at Lundy Avenue, as part of a comprehensive



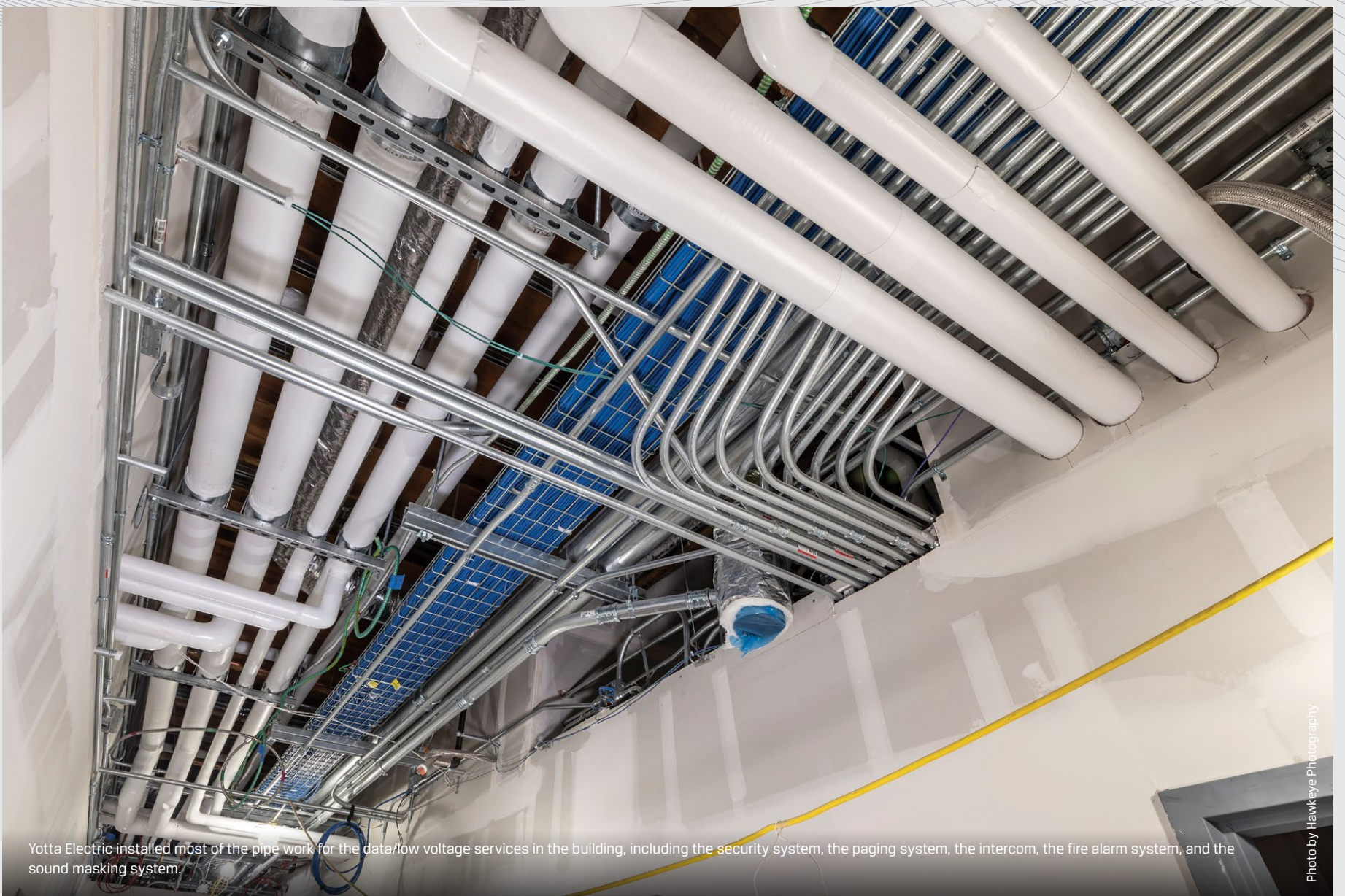
Yotta Electric built out the TB Clinic's new main electrical room with a 2000-amp switchboard.

Photo by Hawkeye Photography



New 175-kilowatt generator installed by Yotta Electric for emergency power backup.

Photo by Hawkeye Photography



Yotta Electric installed most of the pipe work for the data/low voltage services in the building, including the security system, the paging system, the intercom, the fire alarm system, and the sound masking system.

Photo by Hawkeye Photography

tenant improvement plan for the facility. SBAY Construction is the General Contractor for the Lundy Avenue building, with Friday Ignacio serving as the SBAY project manager, and Ronald Molina as SBAY superintendent. Al Matin is the SBAY owner.

Yotta Electrical Services installed new electrical and data/low voltage services in the Lundy Avenue facility, along with sound masking, a new generator, and car charging stations. Tom Burg is the project manager for Yotta Electrical Services.

Yotta Electrical Services changed out all of the electrical distribution in the Lundy Avenue building, starting with

the 2000-amp switchboard, putting in new panels throughout the facility. They also built out a new main electrical room which is in the rear middle of the building with the new 2000-amp service. Yotta Electrical Services installed a new transfer switch and a 600-amp emergency distribution panel. They also installed new lighting and new receptacles throughout the building.

Yotta installed a new 175-kilowatt generator in the back parking lot behind the building which is used for emergency power backup.

Yotta Electrical Services installed most of the pipe work for the data/low voltage services in the building, including



Revamped treatment room at the TB Clinic provides state-of-the-art facility for providing health assessments and treatment for newly arriving refugees.

Photo by Hawkeye Photography



The main lobby of the TB Clinic provides a warm welcome for refugees.

Photo by Hawkeye Photography

the security system, the paging system, the intercom, the fire alarm system, and the sound masking system. They worked with several subcontractors to pull the wire on the final connections, including the fire alarm system and the security system. The sound masking system delivers white noise throughout the building to muffle any echoing or other extraneous noise. Yotta installed two car charging stations in the back parking lot.

"We had a great team working on the project," said project manager Tom Burg.

"It wouldn't have been possible to accomplish without such a strong field crew. We are blessed to have them

working for us." Leon Baderie served as the acting superintendent.

Jack Russo from the International Brotherhood of Electrical Workers (IBEW) Local 332 was the leader of Local 332's team, which included Jose Amezcua, Sean West, Jonathan Esquivel, Antonio Flores and Christian Hernandez.

Burg said that coordination with subcontractors presented a challenge, as did supply chain procurement. "Each sector (electrical, data, etc), presented its own unique challenges," he said. "We had to make sure our subcontractors had all the latest information and that we had everything covered." The supply chain challenges, like obtaining **CONTINUED ON NEXT PAGE >**



Yotta Electric worked with several subcontractors to pull the wire on the final connections.

Photo by Hawkeye Photography



Finished electrical pipework supplies electrical distribution and data/low voltage services throughout the TB Clinic facility.

Photo by Hawkeye Photography



Valley Health Center Lundy is the new home of the Tuberculosis and Refugee Clinic of Santa Clara County.

Photo by Hawkeye Photography



Yotta team members, from left to right: Sean West, Jack Russo, Jose Amezcua, Tom Burg

Photo by Hawkeye Photography

## Yotta Electrical Services Installs Electrical Wiring In The New And Revamped TB And Refugee Clinic Of Santa Clara County

CONTINUED FROM PAGE 7

the main switchboard, light fixtures, and the transfer switch, have been a problem as well," he added.

"We are a company people can count on," Burg said. "We pride ourselves in getting things done for a fair price in a reasonable amount of time. We pride ourselves on the quality of our workmanship."

Yotta Electrical Services, a minority owned business, focuses on the tenant improvement sector and the medical sector. They have recently completed several projects at the San Francisco Medical Center and UCSF.

**For more information about Yotta Electrical Services, contact Tom Burg at [Tom@Yottaelectric.com](mailto:Tom@Yottaelectric.com) or call 408-205-6478.**

### TUBERCULOSIS AND REFUGEE CLINIC PROJECT TEAM

**OWNER:**

Santa Clara County

**GENERAL CONTRACTOR:**

SBAY CONSTRUCTION

Al Matin, Owner

Friday Ignacio, Project Manager

Ronald Molina, Superintendent

**ELECTRICAL CONTRACTOR:**

Yotta Electrical Services

Tom Burg, Project Manager

Leon Badarie, Acting Superintendent

Jack Russo, General Foreman

**DATA COMMUNICATIONS SUBCONTRACTOR:**

McMillan Data Communications

**SECURITY SUBCONTRACTOR:**

RFI

**FIRE ALARM SUBCONTRACTOR:**

Sabah

**ELECTRICIANS AND TECHNICIANS:**

From the International Brotherhood of Electrical Workers (IBEW) Local 332, San Jose, including Jose Amezcua, Sean West, Jonathan Esquivel, Antonio Flores and Christian Hernandez